



ANNUAL FINANCIAL REPORT

For the Fiscal Year Ended June 30, 2019

C O N T E N T S

2	Independent Auditor's Report
4	Go Greater Campaign
6	Management's Discussion & Analysis (Unaudited)
10	Fiscal Year 2019 Campaign Theme – Your Health
16	Fiscal Year 2020 Campaign Theme – Your Environment
20	Creating Lasting Impact
22	Financial Statements:
	• Statement of Net Position
	• Statement of Revenues, Expenses and Changes in Net Position
	• Statement of Cash Flows
28	Notes To Financial Statements
50	Supplementary Information (Unaudited):
	• Supplemental Schedule of Revenues, Expenses and Changes in Net Position
	• Supplemental Schedule of Changes in Net Pension Asset and Related Ratios
	• Supplemental Schedule of Pension Contributions
54	Independent Auditor's Report on Internal Control Over Financial Reporting and on Compliance and Other Matters Based on an Audit of Financial Statements Performed in Accordance with Government Auditing Standards



Independent Auditor's Report

To the Board of Directors
University of Florida Foundation, Inc.

Report on the Financial Statements

We have audited the accompanying financial statements of the University of Florida Foundation, Inc. (the Foundation), a discrete component unit of the University of Florida, which comprise the statement of net position as of June 30, 2019, and the related statements of revenues, expenses and changes in net position, and cash flows for the year then ended, and the related notes to the financial statements.

Management's Responsibility for the Financial Statements

Management is responsible for the preparation and fair presentation of these financial statements in accordance with accounting principles generally accepted in the United States of America; this includes the design, implementation and maintenance of internal control relevant to the preparation and fair presentation of financial statements that are free from material misstatement, whether due to fraud or error.

Auditor's Responsibility

Our responsibility is to express an opinion on these financial statements based on our audit. We conducted our audit in accordance with auditing standards generally accepted in the United States of America and the standards applicable to financial audits contained in *Government Auditing Standards*, issued by the Comptroller General of the United States. Those standards require that we plan and perform the audit to obtain reasonable assurance about whether the financial statements are free from material misstatement.

An audit involves performing procedures to obtain audit evidence about the amounts and disclosures in the financial statements. The procedures selected depend on the auditor's judgment, including the assessment of the risks of material misstatement of the financial statements, whether due to fraud or error. In making those risk assessments, the auditor considers internal control relevant to the entity's preparation and fair presentation of the financial statements in order to design audit procedures that are appropriate in the circumstances, but not for the purpose of expressing an opinion on the effectiveness of the entity's internal control. Accordingly, we express no such opinion. An audit also includes evaluating the appropriateness of accounting policies used and the reasonableness of significant accounting estimates made by management, as well as evaluating the overall presentation of the financial statements.

We believe that the audit evidence we have obtained is sufficient and appropriate to provide a basis for our audit opinion.

Opinion

In our opinion, the financial statements referred to above present fairly, in all material respects, the financial position of the Foundation as of June 30, 2019, and the changes in financial position and cash flows for the year then ended in accordance with accounting principles generally accepted in the United States of America.

THE POWER OF BEING UNDERSTOOD
AUDIT | TAX | CONSULTING

Emphasis of Matter

As discussed in Note 1 to the accompanying financial statements, the Foundation adopted the governmental financial reporting model as of July 1, 2018. As a result, the Foundation's beginning net position has been restated. Our opinion is not modified with respect to this matter.

Other Matters***Required Supplementary Information***

Accounting principles generally accepted in the United States of America require that the management's discussion and analysis shown in the table of contents be presented to supplement the basic financial statements. Such information, although not a part of the basic financial statements, is required by the Governmental Accounting Standards Board, who considers it to be an essential part of financial reporting for placing the basic financial statements in an appropriate operational, economic or historical context. We have applied certain limited procedures to the required supplementary information in accordance with auditing standards generally accepted in the United States of America, which consisted of inquiries of management about the methods of preparing the information and comparing the information for consistency with management's responses to our inquiries, the basic financial statements and other knowledge we obtained during our audit of the basic financial statements. We do not express an opinion or provide any assurance on the information because the limited procedures do not provide us with sufficient evidence to express an opinion or provide any assurance.

Other Information

Our audit was conducted for the purpose of forming an opinion on the financial statements that collectively comprise the Foundation's basic financial statements. The accompanying supplementary information as listed in the table of contents are presented for purposes of additional analysis and are not a required part of the basic financial statements.

The accompanying supplementary information is the responsibility of management and was derived from and relates directly to the underlying accounting and other records used to prepare the basic financial statements. Such information has been subjected to the auditing procedures applied in the audit of the basic financial statements and certain additional procedures, including comparing and reconciling such information directly to the underlying accounting and other records used to prepare the basic financial statements or to the basic financial statements themselves, and other additional procedures in accordance with auditing standards generally accepted in the United States of America. In our opinion, the accompanying supplementary information is fairly stated, in all material respects, in relation to the basic financial statements as a whole.

The accompanying other information has not been subjected to the auditing procedures applied in the audit of the basic financial statements, and accordingly, we do not express an opinion or provide any assurance on it.

Other Reporting Required by Government Auditing Standards

In accordance with *Government Auditing Standards*, we have also issued our report dated September 27, 2019 on our consideration of the Foundation's internal control over financial reporting and on our tests of its compliance with certain provisions of laws, regulations, contracts, and grant agreements and other matters. The purpose of that report is solely to describe the scope of our testing of internal control over financial reporting and compliance and the results of that testing, and not to provide an opinion on the effectiveness of the Foundation's internal control over financial reporting or on compliance. That report is an integral part of an audit performed in accordance with *Government Auditing Standards* in considering the Foundation's internal control over financial reporting and compliance.

RSM US LLP

Orlando, Florida
September 27, 2019



TOGETHER WE *Go Greater*

FOUR YEARS AGO, the University and the Foundation, collectively as University Advancement, quietly began an effort to accelerate UF's ascent to the nation's very best public universities. Today, we celebrate how high we have climbed. Our Go Greater campaign is an ambitious statement of who we want to be, and reflects our steadfast commitment to making an impact across the state, the nation and the world. Through the generosity of our loyal alumni and friends, and the boundless vision of The Gator Nation, we continue to elevate the University of Florida to the highest peaks.



Advancement Values

EXCELLENCE

Striving to reach
The Gold Standard

SERVICE

To help our colleagues
reach their goals

TEAM

Together everyone
achieves more



Management's Discussion & Analysis (Unaudited)

FOR THE FISCAL YEAR ENDED JUNE 30, 2019



The Foundation operates as part of University Advancement to support the University's trifold mission of teaching, research and service.

INTRODUCTION

The University of Florida Foundation, Inc. (the Foundation) is a nonprofit entity established to solicit and manage funds for the benefit of the University of Florida (the University). The Foundation is governed by a Board of Directors (Board) consisting of a majority of volunteer board members, some of whom are significant donors to the Foundation. The Board also includes ex-officio University and Foundation officials. Board members are subject to approval by the University of Florida Board of Trustees. The Foundation is presented as a discrete component unit of the University and is certified as a direct support organization. The Foundation operates as an integral part of the wider consortium of offices and individuals known as University Advancement that work collaboratively to marshal resources in support of the University's trifold mission of teaching, research and service. In addition to the Foundation, this integrated model includes the University of Florida Alumni Association, Inc., as well as development and alumni relations teams embedded in the colleges and units of the University.

OVERVIEW OF FINANCIAL STATEMENTS

The Management's Discussion and Analysis (MD&A) provides an overview of the financial position and activities of the Foundation, including its blended component unit the University of Florida Alumni Association, Inc., as of and for the fiscal

years ended June 30, 2019 and 2018 and should be read in conjunction with the financial statements and notes thereto.

The financial statements are prepared on the accrual basis of accounting in accordance with accounting principles generally accepted in the United States of America, as promulgated by the Governmental Accounting Standards Board (GASB). See the notes to the financial statements for a summary of the Foundation's significant accounting policies.

Pursuant to GASB Statement No. 35 *Basic Financial Statements—Management's Discussion and Analysis— for Public Colleges and Universities*, the Foundation's basic financial statements include: the Statement of Net Position, the Statement of Revenues, Expenses and Changes in Net Position, the Statement of Cash Flows and other required supplemental information.

STATEMENT OF NET POSITION

The Statement of Net Position reflects the assets, deferred outflows of resources, liabilities and deferred inflows of resources of the Foundation and presents the financial position of the Foundation at a point in time. Assets and deferred outflows less liabilities and deferred inflows equal net position, which is one indicator of the Foundation's current financial condition. The changes in net position that occur over time indicate improvement or deterioration in the Foundation's financial condition. Net investment in capital assets presents the Foundation's equity in property and equipment. Restricted net position is comprised of expendable and nonexpendable and consists of assets that have constraints placed upon their use either by external donors or creditors or through laws or regulations imposed through constitutional provisions or enabling legislature. Nonexpendable assets represent endowment assets whose principal cannot be spent and are required by the donor to be held in perpetuity. Unrestricted net position consists of net assets that do not meet the definition of restricted or net investment in capital assets and are available to the Foundation for any legal use.

The following schedule is a summary of the Foundation's statements of net position as of June 30, 2019 and 2018.

Condensed Statements of Net Position (in thousands)

	2019	2018	Increase (decrease)	Percent change
Assets				
Current assets	\$ 76,132	\$ 67,964	\$ 8,168	12.02%
Investments	1,885,113	1,769,947	115,166	6.51%
Capital assets, net	62,133	62,062	71	0.11%
Other noncurrent assets	79,912	58,922	20,990	35.62%
Total assets	2,103,290	1,958,895	144,395	7.37%
Deferred outflows of resources	-	315	(315)	-100.00%
Total assets and deferred outflows of resources	\$ 2,103,290	\$ 1,959,210	\$ 144,080	7.35%
Liabilities				
Current liabilities	\$ 5,816	\$ 4,936	\$ 880	17.83%
Amounts held on behalf of University of Florida related entities	39,960	29,763	10,197	34.26%
Other noncurrent liabilities	45,306	26,849	18,457	68.74%
Total liabilities	91,082	61,548	29,534	47.99%
Deferred inflows of resources	19,572	14,928	4,644	31.11%
Total liabilities and deferred inflows of resources	110,654	76,476	34,178	44.69%
Net position				
Net investment in capital assets	60,117	58,930	1,187	2.01%
Restricted - expendable	553,534	503,042	50,492	10.04%
Restricted - nonexpendable	1,360,876	1,306,997	53,879	4.12%
Unrestricted	18,109	13,765	4,344	31.56%
Total net position	\$ 1,992,636	\$ 1,882,734	\$ 109,902	5.84%

The Foundation's assets and deferred outflows of resources totaled \$2.1 billion as of June 30, 2019. This balance reflects an increase of \$144.1 million, or 7.4% compared to June 30, 2018. Current assets increased \$8.2 million primarily due to increases in current investments of \$5.1 million and current pledges receivable of \$2.7 million. Noncurrent investments increased by \$115.2 million, driven by investment performance, new trust assets and additional contributions to the endowment. Other noncurrent assets increased \$21.0 million, primarily due to increases in noncurrent pledges receivable of \$13.4 million, real estate held for sale of \$3.1 million and net pension asset of \$3.6 million.

The Foundation's liabilities and deferred inflows of resources totaled \$110.7 million as of June 30, 2019. This balance reflects an increase of \$34.2 million, or 44.7% compared to June 30, 2018. Current liabilities increased \$0.9 million primarily due to the increase in current split-interest liabilities of \$1.0 million. Amounts held on behalf of University of Florida related entities increased \$10.2 million, primarily due to growth in pledges receivable, new contributions and return on investment. Other noncurrent liabilities increased \$18.5 million, primarily due to an increase in noncurrent split-interest liabilities of \$19.2 million less reductions in capital related notes payable of \$1.1 million. Deferred inflows increased \$4.6 million due to increases in split-interest agreements, primarily due to new trust additions and investment performance.



Your Health

*Breakthroughs don't end in the lab. We go greater
for better recovery through discovery, treatments
and care, which means a healthier world.*

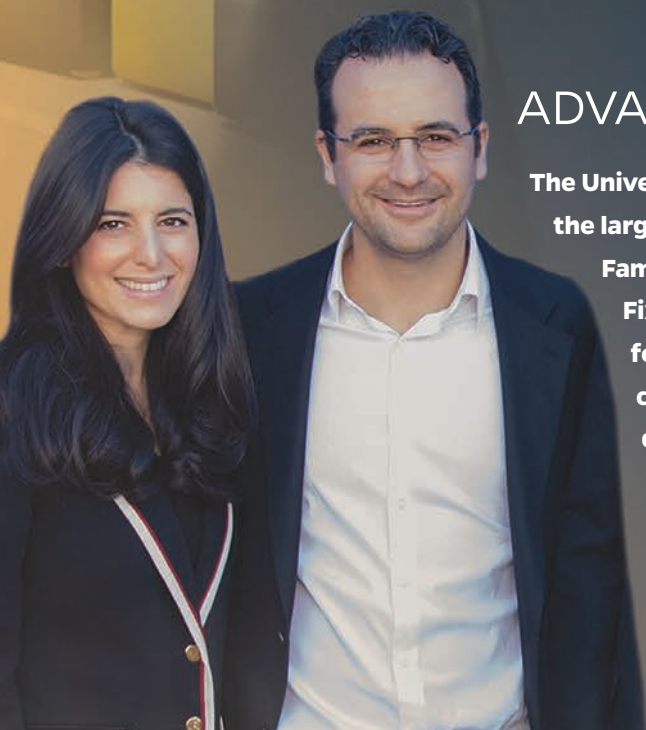
**The Go Greater campaign theme For fiscal year 2019 was Your Health.
For more information, visit www.uff.ufl.edu/theme/your-health.**



Together We GO GREATER *to Strengthen Your* **HEALTH**

ADVANCING RESEARCH

The University of Florida and UF Health have received a \$20 million gift, the largest Your Health themed gift, from the Lauren and Lee Fixel Family Foundation. This gift will be used to establish the Norman Fixel Institute for Neurological Diseases at UF Health, an institute focused on advancing research, technological innovation and clinical care for Parkinson's disease and other neurodegenerative diseases, including Alzheimer's, Lewy body, ALS, dystonia and concussions. The Fixel family's gift will be matched dollar for dollar by the University. The total \$40 million funding package will catalyze a \$100 million capital campaign to provide additional resources for scientists and doctors working to advance treatments of neurological disorders at the institute.



STATEMENT OF REVENUES, EXPENSES AND CHANGES IN NET POSITION

The Statement of Revenues, Expenses and Changes in Net Position presents the Foundation's revenue and expense activity for a given fiscal year. Revenues and expenses are recognized when earned or incurred, regardless of when cash is received or paid. GASB Statement No.35 categorizes revenue and expenses as either operating or nonoperating.

Operating revenues include non-endowed contributions to the Foundation, support from the University, investment return and other non-endowed revenues. Operating expenses include distributions of contributions and spendable

endowment amounts to campus, as well as expenses supporting the advancement operations of the University. Nonoperating revenues include changes in value of non-endowed split-interest agreements. Changes in nonexpendable include endowment contributions and other revenues designated for permanent restriction.

The majority of the Foundation's expenses are operating expenses as defined by GASB Statement No. 35. GASB gives financial reporting entities the choice of reporting operating expenses in the functional or natural classifications. The Foundation has chosen to report the expenses by their functional classifications on the Statement of Revenues, Expenses and Changes in Net Position.

The following table summarizes the Foundation's changes in net position for the fiscal years ended June 30, 2019 and 2018:

Condensed Statements of Revenues, Expenses and Changes in Net Position (in thousands)

	2019	2018	Increase (decrease)	Percent change
Operating revenues				
Contributions, net	\$ 78,780	\$ 73,890	\$ 4,890	6.62%
Support from the University of Florida	19,451	19,420	31	0.16%
Investment return, net	117,630	139,206	(21,576)	-15.50%
Other operating revenues	8,865	9,615	(750)	-7.80%
Total operating revenues	<u>224,726</u>	<u>242,131</u>	<u>(17,405)</u>	<u>-7.19%</u>
Operating expenses				
Program services	127,248	127,775	(527)	-0.41%
Supporting services	42,501	40,773	1,728	4.24%
Total operating expenses	<u>169,749</u>	<u>168,548</u>	<u>1,201</u>	<u>0.71%</u>
Operating income	54,977	73,583	(18,606)	-25.29%
Nonoperating revenues	<u>1,102</u>	<u>36</u>	<u>1,066</u>	<u>2,961.11%</u>
Income before changes in nonexpendable	<u>56,079</u>	<u>73,619</u>	<u>(17,540)</u>	<u>-23.83%</u>
Changes in nonexpendable				
Endowment contributions	51,384	57,161	(5,777)	-10.11%
Other changes in nonexpendable	2,439	1,625	814	50.09%
Total changes in nonexpendable	<u>53,823</u>	<u>58,786</u>	<u>(4,963)</u>	<u>-8.44%</u>
Change in net position	109,902	132,405	(22,503)	-17.00%
Net position - beginning of year	<u>1,882,734</u>	<u>1,750,329</u>	<u>132,405</u>	<u>7.56%</u>
Net position - end of year	<u>\$ 1,992,636</u>	<u>\$ 1,882,734</u>	<u>\$ 109,902</u>	<u>5.84%</u>

The Foundation's net position increased \$109.9 million, or 5.8% during the fiscal year, driven by investment performance and continued strength in contribution revenue.

OPERATING REVENUES

The following summarizes the operating revenues by source that were used to fund operating activities for the fiscal years ended June 30, 2019 and 2018:

Operating Revenues (in thousands)				
	2019	2018	Increase (decrease)	Percent change
Contributions, net	\$ 78,780	\$ 73,890	\$ 4,890	6.62%
Support from the University of Florida	19,451	19,420	31	0.16%
Investment return, net	117,630	139,206	(21,576)	-15.50%
Other operating revenues	8,865	9,615	(750)	-7.80%
Total operating revenues	\$ 224,726	\$ 242,131	\$ (17,405)	-7.19%

Operating revenues totaled \$224.7 million for the fiscal year, a decrease of \$17.4 million, or -7.2% as compared to the previous fiscal year. Non-endowed contributions increased \$4.9 million to \$78.8 million due to continued strength in donor giving and

campaign initiatives. Investment return decreased \$21.6 million due to lower investment performance as compared to prior fiscal year. Other operating revenues decreased \$0.8 million due to lower alumni service revenues, license tag revenues and other revenues.



OPERATING EXPENSES

The following summarizes the operating expenses by function for the fiscal years ended June 30, 2019 and 2018:

Operating Expenses (in thousands)

	2019	2018	Increase (decrease)	Percent change
Operating expenses				
Program services				
General college support	\$ 44,492	\$ 37,336	\$ 7,156	19.17%
Student financial aid	23,968	24,777	(809)	-3.27%
Faculty and staff support	21,386	21,475	(89)	-0.41%
Research	19,717	19,504	213	1.09%
Facilities	6,016	14,727	(8,711)	-59.15%
Other	11,669	9,956	1,713	17.21%
Total program services	127,248	127,775	(527)	-0.41%
Supporting services				
Communications and marketing	2,028	2,193	(165)	-7.52%
Alumni relations	5,619	4,946	673	13.61%
Development	23,532	23,399	133	0.57%
Operations	10,172	9,052	1,120	12.37%
Talent management	1,150	1,183	(33)	-2.79%
Total supporting services	42,501	40,773	1,728	4.24%
Total operating expenses	\$ 169,749	\$ 168,548	\$ 1,201	0.71%

Operating expenses totaled \$169.7 million for the fiscal year, an increase of \$1.2 million, or 0.7% as compared to the previous fiscal year. Program services are predominantly transfers to the University for the benefit of University programs. They consist of monthly transfers of non-endowed contributions as well as quarterly transfers of endowment spendable income.

Program services expenses are reported in their functional classification, which is based on the donor intent or purpose of each underlying established fund. Changes between fiscal years are primarily related to the level of contributions to each functional classification and to a lesser extent the changes in the functional makeup of the endowment. Program services expenses totaled \$127.2 million, a decrease of \$0.5 million, or -0.4% as compared to the previous fiscal year. The largest component was general college support, which also saw the largest increase over the prior year. Facilities expenses saw the largest decline, primarily due to several large

transfers of accumulated contributions for facilities to a component unit of the University in the prior year.

Supporting services expenses are part of the Foundation's operating budget which is approved annually by the Foundation's board of directors. They are reported in their functional classification, which is based on the Foundation's organizational structure. Supporting services expenses totaled \$42.5 million, an increase of \$1.7 million, or 4.2% over the previous fiscal year. The increase was primarily due to growth in alumni relations and operations. Alumni relations expenses totaled \$5.6 million, an increase of \$0.7 million, or 13.6% as compared to prior year. This was primarily due to new investments in programs and strategies to increase alumni participation and giving. Operations expenses totaled \$10.2 million, an increase of \$1.1 million, or 12.4% as compared to prior year. This was primarily due to new investments in data and report writing, real estate management, and strategy and project management.

NONOPERATING REVENUES AND CHANGES IN NONEXPENDABLE

The following summarizes the nonoperating revenues and changes in nonexpendable by source for the fiscal years ended June 30, 2019 and 2018:

Nonoperating Revenues and Changes in Nonexpendable (in thousands)				
	2019	2018	Increase (decrease)	Percent change
Nonoperating revenues	<u>\$ 1,102</u>	<u>\$ 36</u>	<u>\$ 1,066</u>	<u>2,961.11%</u>
Changes in nonexpendable				
Endowment contributions	51,384	57,161	(5,777)	-10.11%
Other changes in nonexpendable	2,439	1,625	814	50.09%
Total changes in nonexpendable	<u>\$ 53,823</u>	<u>\$ 58,786</u>	<u>\$ (4,963)</u>	<u>-8.44%</u>

Nonoperating revenues totaled \$1.1 million for the fiscal year, an increase of \$1.1 million, or 2,961.11% as compared to the previous fiscal year. Nonoperating revenues consisted of the change in value of restricted expendable split-interest agreements, revenue that was recognized due to the termination of various split-interest agreements during the fiscal year. Changes in nonexpendable totaled \$53.8 million, a decrease of

\$5.0 million, or -8.4% as compared to the previous fiscal year. Endowment contributions totaled \$51.4 million, down \$5.8 million from the prior year. Other changes in nonexpendable totaled \$2.4 million, an increase of \$0.8 million over the prior year, primarily due to change in value of restricted nonexpendable split-interest agreements, revenue that was recognized due to the termination of various split-interest agreements during the fiscal year.





Your Environment

Making our planet our priority. We go greater to advance biodiversity and quality of life — for all life.



Together We GO GREATER to Strengthen Your **ENVIRONMENT**

The Go Greater campaign theme for fiscal year 2020 is Your Environment.
For more information, visit www.uff.ufl.edu/theme/your-environment.

STATEMENT OF CASH FLOWS

The Statement of Cash Flows provides information about the Foundation's financial results by reporting the major sources and uses of cash and cash equivalents. This statement will assist in evaluating the Foundation's ability to generate net cash flows, its ability to meet its financial obligations as they come due and its need for external financing. Cash flows from operating activities show the net cash used by typically ongoing operating activities

of the Foundation. Cash flows from capital and related financing activities include changes associated with the long-term debt activities of the Foundation. Cash flows from investing activities show the net sources and uses of cash related to purchasing or selling investments and earnings income on those investments.

The following table summarizes the major sources and uses of cash for the fiscal years ended June 30, 2019 and 2018:

Condensed Statements of Cash Flows (in thousands)

	2019	2018	Increase (decrease)	Percent change
Cash flows provided by (used in)				
Operating activities	\$ (90,378)	\$ (71,533)	\$ (18,845)	26.34%
Investing activities	3,371	29,979	(26,608)	-88.76%
Capital and related financing activities	(2,286)	(2,139)	(147)	6.87%
Noncapital financing activities	88,025	43,739	44,286	101.25%
Change in cash and cash equivalents	(1,268)	46	(1,314)	-2,856.52%
Cash and cash equivalents, beginning of year	7,937	7,891	46	0.58%
Cash and cash equivalents, end of year	\$ 6,669	\$ 7,937	\$ (1,268)	-15.98%

Cash and cash equivalents decreased by \$1.3 million, or -16.0% during the fiscal year. Net cash flows used in operating activities increased by \$18.8 million, primarily due to a decrease in non-endowed cash contributions of \$16.2 million as compared to prior year. Net cash flows provided by investing activities decreased by \$26.6 million, primarily due to increased investment purchases of \$36.2 million as compared to prior year. Net cash flows provided by noncapital financing activities increased by \$44.3 million in the current year, primarily due to an increase in contributions restricted for long-term investment of \$20.1 million and an increase in pledges receivable

and contributions to University related entities of \$25.3 million as compared to prior year.

CAPITAL ASSETS AND DEBT ADMINISTRATION

The Foundation has \$62.1 million of capital assets, included in noncurrent assets on the accompanying Statement of Net Position, as of June 30, 2019 and 2018. These balances are net of accumulated depreciation of \$9.1 million and \$8.2 million, respectively. The following table summarizes capital assets as of June 30, 2019 and 2018:

Capital Assets (in thousands)

	2019	2018	Increase (decrease)	Percent change
Land held for use and land preserve	\$ 58,528	\$ 58,546	\$ (18)	-0.03%
Buildings held for use, net	2,285	2,276	9	0.40%
Equipment, furniture and vehicles	1,225	1,145	80	6.99%
Other capital assets	95	95	-	0.00%
Total capital assets, net	\$ 62,133	\$ 62,062	\$ 71	0.11%

The balance at June 30, 2019 is comprised of land and buildings held for use, land preserve, equipment, furniture and vehicles. During the fiscal year, significant changes in capital assets were related primarily to depreciation expense of \$1.0 million, offset by net capital additions of \$1.0 million.

A detailed schedule of capital assets and related activity can be found in Note 9 of the accompanying notes to the financial statements.

At June 30, 2019 and 2018, the Foundation had \$2.0 million and \$3.1 million in debt outstanding, respectively. The following table summarizes debt outstanding as of June 30, 2019, and the preceding fiscal year:

Capital Asset-Related Debt (in thousands)

	2019	2018	Increase (decrease)	Percent change
Shands Teaching Hospital and Clinics, Inc. parking garage	\$ 500	\$ 600	\$ (100)	-16.67%
College of the Arts warehouse	516	533	(17)	-3.19%
University retreat center	1,000	2,000	(1,000)	-50.00%
Total capital asset-related debt	\$ 2,016	\$ 3,133	\$ (1,117)	-35.65%

During the fiscal year, the Foundation reduced debt by approximately \$1.1 million related to principal payments. Additional information on the Foundation's long-term debt obligations can be found in Note 10 of the accompanying notes to the financial statements.

ECONOMIC OUTLOOK

The economic outlook of the Foundation is affected by the overall economy, state and federal laws, investment returns, support received from the University, charitable contributions and various other revenue sources. Changes in state appropriations to the University may result in changes in the amount of support the Foundation receives from the University.

Budgeted revenues that fund supporting services are driven primarily from support from the University and fees assessed on charitable contributions and the endowment. As the Foundation and University enter into year five of the Go Greater campaign, the projections and resulting budget for revenues for the upcoming fiscal year increased by 10%. Other than the overall economy and investment returns, management is not aware of any factors that would

have a significant impact on budgeted revenues for the next fiscal year.

FLORIDA SINGLE AUDIT

In accordance with State of Florida Chapter 10.550, *Rules of the Auditor General*, the financial activity and internal controls surrounding the activity of the University of Florida License Plate Project and the University Major Gifts Program were audited as of and for the fiscal year ended June 30, 2019. The auditor's report on these procedures is not included in this document, but can be found at www.uff.ufl.edu. The report includes no findings, questioned costs or deficiencies in internal control over compliance.

REQUESTS FOR INFORMATION

Questions concerning information provided in the MD&A or other required supplemental information and financial statements and notes thereto, or requests for additional financial information should be addressed to the University of Florida Foundation, 1938 W. University Avenue, Gainesville, Florida 32603 or finance-accounting@uff.ufl.edu.

Lasting Impact

Gifts from alumni and friends create lasting impact, and are catalysts for advancements, all across the University, the State, the Nation and the world. These gifts enable the University to better discover, explore, educate and serve families and communities. Endowments provide this ability in perpetuity.

ENDOWMENTS

99.5% of the endowment is designated by donors for restricted purposes

3,665

ENDOWMENT
FUNDS

\$1.83B

ENDOWMENT
MARKET VALUE

\$60.1M

ENDOWMENT
PAYOUT

ENDOWMENT MARKET VALUE AND PAYOUT BY FISCAL YEAR

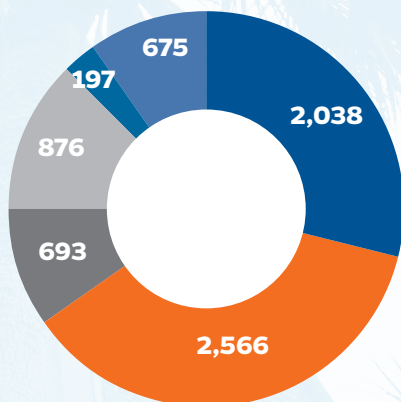


ALL DONOR FUNDS

99.0% of program service expenses were from funds designated by donors for restricted purposes

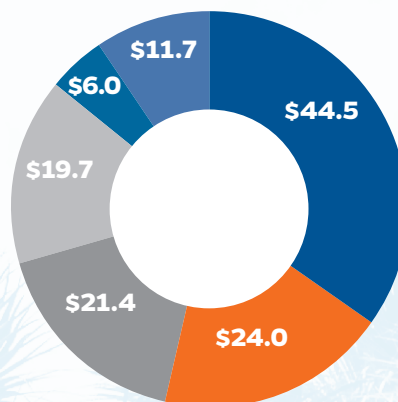
NUMBER OF FUNDS

(7,045 funds)



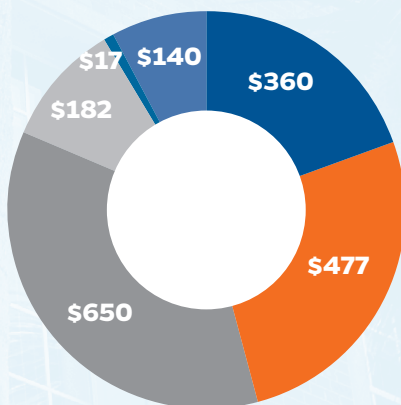
PROGRAM SERVICE EXPENSES

(in \$ millions)



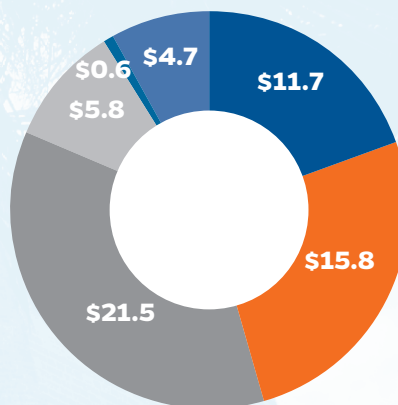
ENDOWMENT MARKET VALUE

(in \$ millions)



ENDOWMENT PAYOUT

(in \$ millions)



General college support
Student financial aid

Faculty and staff support
Research

Facilities
Other



Financial Statements

FOR THE FISCAL YEAR ENDED JUNE 30, 2019



Statement of Net Position (as of June 30, 2019)

Assets**Current assets**

Cash and cash equivalents	\$	6,668,831
Receivables and prepaid expenses		32,163,269
Investments		16,055,876
Pledges receivable, net		21,244,150
Total current assets		76,132,126

Noncurrent assets

Investments		1,885,113,179
Pledges receivable, net		52,872,993
Real estate held for sale		8,423,607
Present value of amounts due from externally managed trusts		2,940,048
Capital assets, net		62,133,496
Cash surrender value of life insurance		9,827,681
Other noncurrent assets		77,042
Pension asset, net		5,770,065
Total noncurrent assets		2,027,158,111
Total assets		2,103,290,237

Deferred outflows of resources**Total assets and deferred outflows of resources**

		-
Total assets and deferred outflows of resources	\$	2,103,290,237

Liabilities**Current liabilities**

Accounts payable and accrued expenses	\$	786,607
Other current liabilities		215,436
Long-term liabilities – current portion:		
Notes payable		1,117,510
Split-interest agreements		3,696,330
Total current liabilities		5,815,883

Noncurrent liabilities

Notes payable		898,590
Split-interest agreements		41,225,102
Other noncurrent liabilities		3,182,427
Amounts held on behalf of University of Florida related entities		39,960,159
Total noncurrent liabilities		85,266,278
Total liabilities		91,082,161

Deferred inflows of resources

Split-interest agreements		16,200,319
External trusts		2,940,048
Pension		432,083
Total deferred inflows of resources		19,572,450

Net position

Net investment in capital assets		60,117,396
Restricted:		
Expendable		553,533,635
Nonexpendable		1,360,875,981
Unrestricted		18,108,614
Total net position		1,992,635,626

Total liabilities, deferred inflows of resources and net position

Total liabilities, deferred inflows of resources and net position	\$	2,103,290,237
--	----	----------------------

The accompanying notes are an integral part of these financial statements.

Statement of Revenues, Expenses and Changes in Net Position (fiscal year ended June 30, 2019)**Operating revenues**

Contributions, net	\$ 78,779,694
Support from the University of Florida	19,451,360
Investment return, net	117,630,386
Alumni program support	1,344,628
License plate revenues	2,456,017
Other revenues, gains and losses	5,063,633
Total operating revenues	224,725,718

Operating expenses**Program services**

General college support	44,491,958
Student financial aid	23,967,642
Faculty and staff support	21,385,687
Research	19,716,723
Facilities	6,016,049
Other	11,669,486
Total program services	127,247,545

Supporting services

Communications and marketing	2,027,847
Alumni relations	5,618,688
Development	23,532,643
Operations	10,171,938
Talent management	1,150,216
Total supporting services	42,501,332

Total operating expenses

169,748,877

Operating income

54,976,841

Nonoperating revenues

Change in value of split-interest agreements	1,101,635
Total nonoperating revenues	1,101,635

Income before changes in nonexpendable

56,078,476

Changes in nonexpendable

Endowment contributions	51,383,652
Alumni endowment life memberships	547,500
Other revenues, gains and losses	497,997
Change in value of split-interest agreements	1,393,833
Total changes in nonexpendable	53,822,982

Change in net position

109,901,458

Net position – beginning of year

1,882,734,168

Net position – end of year

\$ 1,992,635,626

The accompanying notes are an integral part of these financial statements.

Statement of Cash Flows (fiscal year ended June 30, 2019)

Cash flows from operating activities

Contributions	\$ 50,776,541
Support from the University of Florida	4,507,988
Alumni program support	1,344,628
License plate revenues	2,456,016
Other revenues, gains and losses	5,035,793
Program services payments	(123,587,921)
Supporting services payments	(30,911,024)
Net cash used in operating activities	(90,377,979)

Cash flows from investing activities

Investment purchases	(41,317,573)
Investment sales and maturities	42,176,560
Interest and dividends, net	1,883,618
Income tax refund	3,528
Notes receivable originations	(100,000)
Notes receivable collections	100,000
Real estate sales	625,273
Net cash provided by investing activities	3,371,406

Cash flows from capital and related financing activities

Real estate purchases	(281,040)
Capital asset purchases	(817,585)
Capital debt principal payments	(1,116,493)
Capital debt interest payments	(71,507)
Net cash used in capital and related financing activities	(2,286,625)

Cash flows from noncapital financing activities

Contributions restricted for long-term investment	77,839,971
Alumni program support restricted for long-term investment	547,500
Other revenues, gains and losses restricted for long-term investment	504,762
Proceeds from University of Florida related entities	12,810,761
Beneficiary and other split-interest payments	(3,678,386)
Net cash flows provided by noncapital financing activities	88,024,608

Change in cash and cash equivalents

(1,268,590)

Cash and cash equivalents – beginning of year

7,937,421

Cash and cash equivalents – end of year

\$ 6,668,831

Statement of Cash Flows (fiscal year ended June 30, 2019)**Reconciliation of operating income to net cash used in operating activities**

Operating income	\$	54,976,841
Adjustments to reconcile operating income to net cash used in operating activities:		
Depreciation expense		961,132
Provision for doubtful accounts and pledges		(7,427,735)
Investment return, net		(117,629,024)
Noncash contributions		(4,587,832)
Income tax refund		(3,528)
Interest expense		82,393
Change in assets, liabilities, deferred outflows of resources and deferred inflows of resources:		
Receivables, prepaid expenses and other assets		(1,524,136)
Pledges receivable		(11,686,686)
Cash surrender value of life insurance		(895,598)
Accounts payable, accrued expenses and other liabilities		253,800
Pension asset, net		(3,644,494)
Pension deferred outflows		314,805
Pension deferred inflows		432,083

Net cash used in operating activities\$ (90,377,979)**Supplemental disclosures of noncash investing, noncapital and financing activities**

Unrealized gains on investments	\$	115,476,251
Donations of real estate held for sale		2,727,000
Donations of real estate held for use		231,692
Donations of non-liquid investments		1,629,140

The accompanying notes are an integral part of these financial statements.



Notes to Financial Statements

FOR THE FISCAL YEAR ENDED JUNE 30, 2019



*UF works every day
to change tomorrow.
Private support from
our generous alumni
and friends powers
breakthroughs
and creates impact.*

NOTE 1. SUMMARY OF SIGNIFICANT ACCOUNTING POLICIES

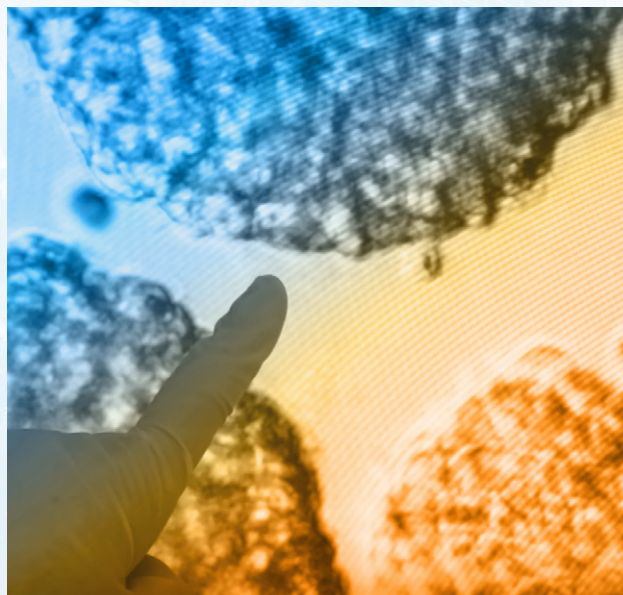
The following is a summary of the more significant accounting policies of the University of Florida Foundation, Inc. (the Foundation), which affect significant elements of the accompanying basic financial statements.

Reporting entity: The Foundation is a nonprofit entity established to solicit and manage funds for the benefit of the University of Florida (the University), a state university, as provided for in Section 1004.28 of the Florida Statutes and Board of Regents Rule 6C-9.011. The Foundation functions as a direct support organization of the University and is reported as a discrete component unit of the University in its financial statements. The financial statements of the Foundation include the accounts of its blended component unit the University of Florida Alumni Association, Inc. The Foundation is a nonprofit entity as described in Section 501(c)(3) of the Internal Revenue Code (IRC) and is exempt from federal and state income taxes pursuant to Section 501(a) of the IRC and Chapter 220.13 of Florida Statutes, except for income from activities not related to its principal function.

Basis of accounting: The financial statements of the Foundation have been prepared using the economic resources measurement focus and the accrual basis of

accounting, in accordance with accounting principles generally accepted in the United States of America (U.S. GAAP), as promulgated by the Governmental Accounting Standards Board (GASB). Accordingly, all assets, deferred outflows of resources, liabilities and deferred inflows of resources are included on the Statement of Net Position. The Statement of Revenues, Expenses and Changes in Net Position presents increases (revenues) and decreases (expenses) in total net position. Under the accrual basis of accounting, revenues are recognized when earned and expenses are recognized when incurred, regardless of timing of cash flows.

Prior to July 1, 2018, the Foundation presented its financial statements under the accounting and financial reporting standards of the Financial Accounting Standards Board (FASB). Amounts for fiscal year ending June 30, 2018 have been restated to comply with GASB accounting and financial reporting standards. Total net assets under FASB at June 30, 2018 were \$1,965,510,392. The conversion to GASB reduced net position at June 30, 2018 by \$82,776,224 to \$1,882,734,168. The reduction in net position was due to the elimination of \$78,818,622 of endowment pledges receivable, a decrease of \$14,927,864 due to the restatement of split-interest agreements and external trusts to deferred inflows of resources under GASB 81 *Irrevocable Split-Interest Agreements* and an increase of \$10,970,262 due to the restatement of the FASB pension liability to a net pension asset under GASB 68 *Accounting and Financial Reporting for Pensions*.



Fund accounting: To help ensure observance of limitations and restrictions placed on the use of resources, the accounts of the Foundation are maintained in accordance with the principles of fund accounting. This is the procedure by which resources for various purposes are classified for accounting and reporting purposes into funds established according to their nature and purpose. Separate accounts are maintained for each fund in the general ledger. For reporting purposes, these funds are combined into one column.

The net position of the Foundation is reported in three categories as follows:

- **Net investment in capital assets:** Represents funds that consist of capital assets, net of accumulated depreciation and reduced by the outstanding balances of any bonds, mortgages, notes or other borrowings that are attributable to and expended on the acquisition, construction or improvement of those assets, net of any related unspent debt proceeds.
- **Restricted:** Restricted net position represents net position that is restricted by constraints placed on the use of resources either externally imposed by creditors, grantors, contributors, or laws or regulations of other governments or imposed by law through enabling legislation. Restricted funds include:
 - **Expendable:** Represents funds that are subject to donor, grantor or other outside party restrictions to use for the benefit of various programs at the University and includes the expendable portion of endowment funds. These programs include endowed chairs and professorships, research funding and student scholarships.
 - **Nonexpendable:** Represents the nonexpendable portion (corpus) of endowment funds that are subject to donor, grantor, or other outside party restrictions for the benefit of various programs at the University. These programs include endowed chairs and professorships, research funding and student scholarships. The corpus of the permanent endowments are retained and reported in nonexpendable endowments, while the net earnings or losses on endowment funds are included in expendable funds available for expenditure.



- **Unrestricted:** Represents funds that are available without restriction for carrying out the Foundation's objectives.

As a general practice, the Foundation applies restricted resources when an expense relating to the purpose restriction imposed by an outside party is incurred before unrestricted resources are used.

Operating and nonoperating activities:

Operating revenues and expenses represent ongoing activities of the Foundation, as well as ongoing activities that are in support of the University's programs. Operating activities relate to the Foundation's principal function, which is to solicit, receive, hold, invest and administer charitable contributions for the benefit of the University. Operating revenues also include alumni program support and license plate revenues. Nonoperating revenues and changes in nonexpendable include certain revenue sources that provide additional funding not included in operating revenues, including endowment contributions.

Revenue recognition: Revenues are reported as increases in unrestricted net position unless use

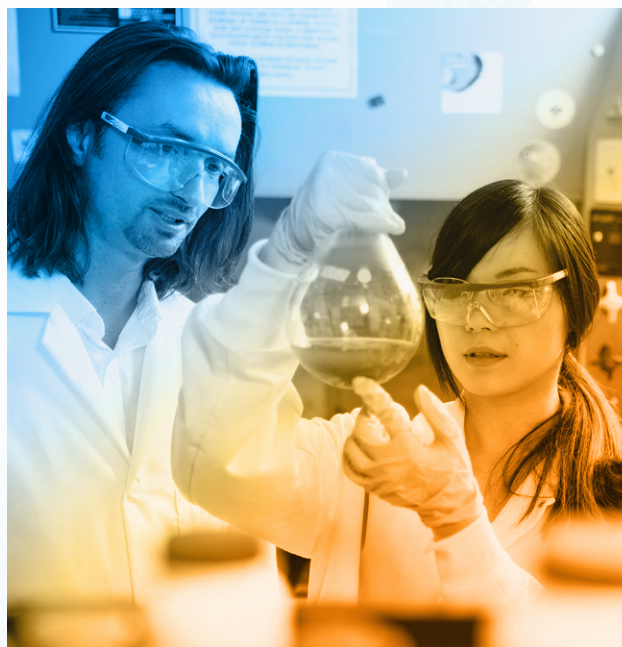
NOTES TO FINANCIAL STATEMENTS

of the related assets is limited by donor-imposed restrictions. Amounts received that are designated for future periods or restricted by the donor for specific purposes are reported as restricted expendable or restricted nonexpendable support that increases these net position classes. Gains and losses on investments and other assets or liabilities are reported as increases or decreases in unrestricted net position unless their use is restricted by explicit donor stipulations or by law.

In the normal course of business, the Foundation accepts financial assets from donors on behalf of specified beneficiaries to which it is financially interrelated and recognizes the fair value of assets received as contributions. Contributions, including unconditional promises to give, are recognized as revenues in the period received and are recorded at their estimated fair value on the date of contribution. Contributions of cash, investment securities or pledges receivable are recognized at fair value when all eligibility requirements have been met and are reported as increases in net position, with the exception of pledges to the endowment which are recognized when funds are received. Property and equipment donated to the Foundation are recorded at their estimated values at the dates of donation. Donated services are not recognized by the Foundation. Conditional promises to give are not recognized until they become unconditional, that is, when the conditions on which they depend are substantially met.

Fundraising: Costs associated with fundraising activities are reported as fundraising expenses in the accompanying statements of revenues, expenses and changes in net position. Included are all direct costs associated with fundraising activities and allocable costs of activities that include both fundraising and program or management and general functions.

Use of estimates: Management uses estimates and assumptions in preparing financial statements in conformity with U.S. GAAP. Those estimates and assumptions affect the reported amounts of assets, deferred outflows of resources, liabilities, deferred inflows of resources, revenues and expenses. Significant estimates used in preparing these financial statements include those used in calculating the



pledges receivable and related allowance for doubtful amounts, the annuity and trust liabilities under split-interest agreements, the pension benefits obligation, and in determining the impairment of long-lived assets and the fair value of certain investments. Actual results could differ from these estimates, and the change may be material.

Cash and cash equivalents: Cash and cash equivalents include cash on hand, cash in banks and money market funds available for immediate use. The Foundation considers all highly-liquid investments with a maturity of three months or less when purchased to be cash equivalents.

Receivables: Receivables primarily consist of amounts due from the University (see Note 13).

Investments and fair value measurements: The Foundation's investments are stated at fair value (see Note 6). Fair value is the price that would be received to sell an asset or paid to transfer a liability in an orderly transaction between market participants at the measurement date. In determining fair value, the Foundation uses various methods including market and income approaches. Based on these approaches, the Foundation often uses certain assumptions that market participants would use in pricing the asset or liability, including assumptions about risk and

or the risks inherent in the inputs to the valuation technique. These inputs can be readily observable, market corroborated, or generally unobservable inputs. The Foundation uses valuation techniques that maximize the use of observable inputs and minimize the use of unobservable inputs.

Pledges receivable: In accordance with GASB Statement No. 33, *Accounting and Financial Reporting for Nonexchange Transactions*, all non-endowed pledges that have met all the eligibility requirements that are verifiable, probable and measurable are recorded at their estimated realizable value on a discounted basis. Unconditional promises to give that are expected to be collected within one year are recorded at net realizable value. Unconditional promises to give that are expected to be collected in future years are recorded at the present value of their estimated future cash flows. The discounts on those amounts are computed using a risk adjusted discount rate applicable to the month in which the promises are received. Amortization of the discounts is included in contributions revenue. The Foundation uses the allowance method to determine uncollectible receivables. The allowance is based upon management estimates of current economic factors and analysis of specific accounts.

Real estate held for sale: The Foundation receives contributions in the form of real estate with donor intentions that the properties are to be sold and proceeds from the sale are to benefit the Foundation or the University. Real estate held for sale is held at fair value less estimated costs to sell.

Capital assets: All real property (buildings and land) is capitalized. Property and equipment purchased with an original cost of \$5,000 or more are recorded at cost. Contributed property and equipment having a value of \$5,000 or more are recorded at their acquisition value on the date of donation. If donors stipulate how long the assets must be used, the contributions are recorded as restricted support for the term of the restricted period. In the absence of such stipulations, contributions of property and equipment are recorded as unrestricted support.

Capital assets are depreciated using the straight-line method of depreciation over the estimated useful lives of the assets. The estimated useful life for vehicles and equipment is three years and ranges from five years to thirty years for buildings and improvements. If equipment is donated to the Foundation for the benefit of the University, the Foundation transfers title to the specified University recipient and no amounts are capitalized in the Foundation's financial statements.

Impairment of long-lived assets: Long-lived assets, such as land, buildings and equipment, are reviewed for impairment whenever events or changes in circumstances indicate that the carrying amount of an asset may not be recoverable. If circumstances require a long-lived asset be tested for possible impairment, the Foundation first compares undiscounted cash flows expected to be generated by an asset to the carrying value of the asset. If the carrying value of the long-lived asset is not recoverable on an undiscounted cash flow basis, an impairment is recognized to the extent that the carrying value exceeds its fair value. Fair value is determined through various valuation techniques including discounted cash flow models and third-party independent appraisals, as considered necessary.

Permanent collections: The Foundation owns the collection of the Samuel P. Harn Museum of Art. These collection items are under the control of the Harn and these items are cataloged, preserved and cared for, and activities verifying their existence and assessing their condition are performed continuously. The collections, which were acquired through contributions and purchases since inception, are not recognized as assets on the Statement of Net Position. The Foundation does not capitalize its permanent collections due to accreditation requirements imposed by the American Alliance of Museums. Contributed collection items are recorded as in-kind contributions and offsetting decreases (program expense) in the appropriate net position class. Purchases of collection items are recorded as decreases (program expense) in the appropriate net position class in the year in which the items are acquired. Proceeds from sales or insurance recoveries are reflected as increases (other revenues) in the appropriate net position class.

Split-interest agreements: The Foundation accepts gifts subject to split-interest agreements. These gifts may be in the form of annuities, life estates or charitable remainder trusts. At the time of receipt, a deferred inflow is recorded based upon the fair value of assets donated and a liability based on the present value of projected future distributions to the beneficiaries. All activity related to the split-interest agreements is recorded as a deferred inflow. No revenue is recognized until termination of the split-interest agreement, when the remaining deferred inflow will be recognized. Liabilities include the present value of projected future distributions to the annuity or trust beneficiaries as determined using mortality tables and the Internal Revenue Service rate for computing charitable deductions for such gifts in effect at the time of the gift ranging from 1.2% to 8.0%. Funds subject to split-interest agreements are classified as restricted expendable or restricted nonexpendable based upon donor designations.

Current Florida law requires charities to maintain certain minimum gift annuity reserves. As of June 30, 2019, the Foundation held assets in excess of the minimum required by state law.

Amounts held on behalf of University of Florida related entities: Gator Boosters, Inc., the University of Florida Law Center Association, Inc., the University of Florida Health Proton Therapy Institute and Shands Teaching Hospital and Clinics, Inc. have entered into agreements with the Foundation for administrative services. The liability included in the accompanying Statement of Net Position represents the amounts due to these entities, including any share of investment returns.

Functional allocation of expenses:

The costs of providing various programs and support services have been summarized on a functional basis in the accompanying Statement of Revenues, Expenses and Changes in Net Position. Accordingly, certain costs have been allocated to the programs and supporting services receiving benefit from the expenditures.

Fundraisers' salaries and expenses paid by various colleges of the University: A portion of certain fundraisers' salaries and expenses is paid either directly to the fundraisers by the colleges which they represent or it is reimbursed to the Foundation by the colleges. These amounts, which totaled \$13,095,764 for the fiscal year ended June 30, 2019 are included in unrestricted operating revenues as support from the University and in expenses as fundraising costs. At June 30, 2019, \$451,848 of these amounts are included in receivables and prepaid expenses.

Compensated absences, other postemployment benefits and pension liability:

Employees earn the right to be compensated during absences for annual leave (vacation) and sick leave pursuant to Board of Governors and University Regulations. Leave earned is accrued to the credit of the employee and records are kept on each employee's unpaid (unused) leave balance. The Foundation accrues accumulated unpaid annual vacation leave and it is included in the accompanying Statement of Net Position. Vacation pay is expensed when earned by the employee up to the maximum payout. Sick leave payments are expensed when used as sick leave and is not eligible for payout.

Employees also accrue retirement benefits for pension and other post-employment benefits over the time of employment at the University. Since all the employees who work for the Foundation are considered employees of the University, the liabilities for pensions and other post-employment benefits are reported by the University and therefore is not reflected on the Foundation's financial statements.

The Foundation maintains a legacy defined benefit plan for former Foundation employees. No current employees were covered by the plan as of the beginning of the fiscal year. For details of the plan, see Note 11 in the accompanying notes of the financial statements.

Income taxes: The Foundation is exempt from federal income taxes under section 501(a) of the IRC

as an organization described in section 501(c)(3). However, the Foundation is subject to income tax on unrelated business income. The Foundation's primary source of unrelated business income is from certain investments in private equity partnerships. For the fiscal year ended June 30, 2019, the Foundation had a net income tax refund of \$3,528, which is included as an adjustment to investment return in the accompanying Statement of Revenues, Expenses and Changes in Net Position.

The Foundation files income tax returns in the U.S. federal jurisdiction and in various state and local jurisdictions. Tax periods open to examination by major taxing jurisdictions to which the Foundation is subject include fiscal years ended June 30, 2016 through June 30, 2019.

The Foundation has reviewed and evaluated the relevant technical merits of each of its tax positions in accordance with U.S. GAAP for accounting for uncertainty in income taxes, and determined that there are no uncertain tax positions that would have a material impact on the financial statements of the Foundation.

Recent accounting pronouncement: In June 2017, the GASB issued Statement No. 87, *Leases*. The objective of this statement is to better meet the information needs of financial statement users by improving accounting and financial reporting for leases by governments. This statement increases the usefulness of governments' financial statements by requiring recognition of certain lease assets and liabilities for leases that previously were classified as operating leases and recognized as inflows of resources or outflows of resources based on the payment provisions of the contract. This statement is effective for the periods beginning after December 15, 2019.

Management is currently evaluating the impact of this unadopted standard on the Foundation's financial statements and does not believe such impact will be material to the Foundation's financial statements.



GRATEFUL GATOR DAY

Saying Thank You is what grateful Gators do! Generally held annually, Grateful Gator Day is an opportunity for students to come together and thank all the donors who support the University. No matter the amount, every gift helps make a difference. Giving by alumni is especially important as strong alumni participation strengthens UF's national rankings.

NOTE 2. CASH AND CASH EQUIVALENTS

The amounts reported by the Foundation as cash and cash equivalents consists of cash on hand, cash in bank demand accounts, cash held at the University and money market funds. Cash and cash equivalents as of June 30, 2019 are as follows:

Note 2. Cash and Cash Equivalents

Cash in bank demand accounts	\$	5,626,036
Money market funds		220,306
Cash held at the University of Florida		820,677
Cash on hand		<u>1,812</u>
Total cash and cash equivalents	\$	<u>6,668,831</u>

Cash in bank demand accounts are held in banks qualified as public depositories under Florida law. All such deposits are insured by Federal depository insurance, up to specified limits, or collateralized with securities held in Florida's multiple financial institution collateral pool required by Chapter 280, Florida Statutes. Money market funds are uninsured and collateralized by securities held by the institution.

As of June 30, 2019, \$220,306 in cash deposits are not insured by federal deposit insurance and are not collateralized.

Custodial credit risk: Custodial credit risk for deposits is the risk that, in the event of the failure of a depository financial institution, the Foundation will not be able to recover deposits. The Foundation has no formal policy for custodial credit risk.

NOTE 3. STATE MATCH RECEIVABLE

In accordance with Florida Statute Chapter 1011.94, *University Major Gifts Program*, endowment contributions of \$100,000 or more, made after July 1, 1985, with income to be used to support libraries and instruction and research programs, are eligible for state match. As of June 30, 2019, the Foundation has approved state matching requests that have not yet been received or recognized in the financial statements totaling \$130,905,263. The

State of Florida has temporarily suspended funding for this program and did not appropriate any funds; therefore, no receivable has been recorded in the accompanying financial statements.

NOTE 4. PLEDGES RECEIVABLE

Pledges receivable and the related allowance for potentially uncollectible amounts as of June 30, 2019, are summarized as follows:

Note 4. Pledges Receivable

Due in less than one year	\$	23,578,413
Due in one to five years		48,171,980
Due after five years		<u>20,149,796</u>
		91,900,189
Less:		
Allowance for doubtful amounts		(9,085,412)
Unamortized discounts		<u>(8,697,634)</u>
Total pledges receivable, net	\$	<u>74,117,143</u>
Current pledges receivable, net	\$	21,244,150
Noncurrent pledges receivable, net		52,872,993
Total pledges receivable, net	\$	<u>74,117,143</u>

Noncurrent pledges receivable are net of discounts amounting to \$8,697,634 as of June 30, 2019.

Pledges receivable are discounted using a risk adjusted discount rate for the month the pledge was initially recognized. The risk adjusted discount rate consists of the 5-year Treasury yield plus a 1% risk premium. Discount rates used ranged from 1.6% to 7.0%.

NOTE 5. INVESTMENT MANAGEMENT AGREEMENT

The University of Florida Board of Trustees created the University of Florida Investment Corporation (UFICO), a direct support organization, to manage University investments. UFICO is governed by a volunteer board of directors independent from the Foundation. The Foundation has a management agreement with UFICO to manage a significant portion of its investments. Management fees are payable at the beginning of each quarter and are computed based on amounts budgeted by UFICO and the market value of the assets as reported by the

custodians at the previous quarter end. The asset valuations used in the fee calculations include all funds and assets under management, including cash and accrued income. Annualized fees charged were 0.18% of the related assets under management for the fiscal year ended June 30, 2019. Management fees expensed during the year ended June 30, 2019 under this agreement totaled \$3,162,327, which are included in investment return in the accompanying Statement of Revenues, Expenses and Changes in Net Position.

NOTE 6. INVESTMENTS

Investments: The goals of the Foundation's investment program for endowments and other investments is set forth in the investment policy as approved by the Foundation's Board of Directors. The goals are specific to individual investment pools but in general it is to provide a total return from the assets invested that will preserve the purchasing power of those assets and, additionally for endowment invested assets, to also generate an income stream to support the activities of the colleges and units of the University. The investment policy provides guidelines as to risk and investment time horizon but does not address specific types of risks such as credit risk, interest rate risk and foreign currency risk that the Foundation may be exposed to as outlined below.

Investments at June 30, 2019 are summarized as follows:



Custodial credit risk: Custodial credit risk is the risk that, in the event of the failure of the counterparty, the Foundation will not be able to recover the value of its investments or collateral securities that are in possession of an outside party. Investments are subject to custodial credit risk if the securities are uninsured, not registered in the Foundation's name, and are held by someone other than the Foundation. The Foundation has no formal policy on custodial credit risk but it is the Foundation's policy to require that all securities be held by the Foundation's agent in the Foundation's name.

Note 6. Investments

	Endowments	Split-interest agreements	Other	Total
Government issues – domestic	\$ -	\$ 286,422	\$ -	\$ 286,422
Government issues – foreign	50,000	-	20,000	70,000
Equities	2,901	-	582,665	585,566
Short-term investments	55,757	2,161,149	13,837,739	16,054,645
Mutual funds – equities	-	40,342,634	-	40,342,634
Mutual funds – fixed income	-	18,226,111	-	18,226,111
Private equity investments	2,292,015	-	-	2,292,015
Private equity investments – UFICO limited partnerships	1,822,166,689	-	1,144,973	1,823,311,662
Total investments	\$ 1,824,567,362	\$ 61,016,316	\$ 15,585,377	\$ 1,901,169,055

NOTES TO FINANCIAL STATEMENTS

Concentration of credit risk: Concentration of credit risk is the risk of loss attributed to the magnitude of an entity's investment in a single issuer. The Foundation has no formal policy on concentration of credit risk.

Credit risk: Credit risk is the risk that an issuer or other counterparty to an investment will not fulfill its obligations. Obligations of the United States Government or obligations explicitly guaranteed by the United States Government are not considered to have credit risk and do not require disclosure of credit quality. The Foundation has no formal policy on credit risk. The private equity funds are unrated. The following schedule represents the ratings of the Foundation's debt investments as of June 30, 2019, using nationally recognized statistical ratings quality organizations:

Note 6. Investments: Credit Risk

	Quality Rating	Fair Value
Government issues – domestic	AAA	\$ 104,872
Government issues – foreign	AA-	70,000
Mutual funds – fixed income	AAA	5,710,052
Mutual funds – fixed income	AA	8,086,610
Mutual funds – fixed income	BBB	3,123,226
Mutual funds – fixed income	BB	1,306,223
Money market funds	AAA	2,257,450
Sweep investment	Unrated	13,797,195
Total		<u>\$ 34,455,628</u>

Interest rate risk: Interest rate risk is the risk that changes in interest rates of debt investments will adversely affect the fair value of an investment. The Foundation has no formal policy on interest rate risk. Interest rate risk for the Foundation's debt investments as of June 30, 2019 is as follows:

Note 6. Investments: Interest Rate Risk

	Average Duration	Fair Value
Government issues – domestic	Less than one year	\$ 104,872
Government issues – domestic	One to five years	79,894
Government issues – domestic	Six to ten years	101,656
Government issues – foreign	One to five years	70,000
Mutual funds – fixed income	One to five years	4,429,449
Mutual funds – fixed income	Six to ten years	13,796,662
Total		<u>\$18,582,533</u>

Foreign currency risk: Foreign currency risk is the risk that changes in exchange rates between the U.S. dollar and foreign currencies could adversely affect an investment's fair value. As of June 30, 2019, the Foundation did not have any direct investments in equity or fixed income investments subject to this risk. As of June 30, 2019, the Foundation's assets were held in U.S. currency, the currency risk on international and global assets is absorbed by the underlying investment managers. The Foundation has no formal policy on foreign currency risk.

Fair value: GASB Statement No. 72, *Fair Value Measurement and Application*, establishes a framework for measuring fair value through a hierarchy that prioritizes the inputs to valuation techniques used to measure fair value. The hierarchy gives the highest priority to unadjusted quoted prices in active markets for identical assets or liabilities (Level 1 measurements) and the lowest priority to unobservable inputs (Level 3 measurements). The level of an asset or liability within the fair value hierarchy is based on the lowest level of any input that is significant to the fair value measurement. The fair value hierarchy categorizes the inputs into three levels:

- **Level 1:** Quoted prices (unadjusted) in active markets for identical assets or liabilities that government can access at the measurement date.
- **Level 2:** Inputs other than quoted prices included within Level 1 that are observable for an asset or liability either directly or indirectly.
- **Level 3:** Unobservable inputs for an asset or liability.

The following valuation techniques and inputs were used to estimate the fair value of assets and liabilities carried at fair value on the Statement of Net Position. There have been no changes to these techniques and inputs during the fiscal year ended June 30, 2019.

Corporate stocks and mutual funds (equities and fixed income): The fair value of these equity and fixed income investments is classified as Level 1, based on quoted market prices in active markets on which individual securities are traded, which for mutual funds represents the net asset value of shares held by the Foundation at fiscal year end.

Short-term investments: The fair value of these short-term investments is classified as Level 2, valued at the net asset value of shares held by the Foundation at year end, based on observable inputs that are derived principally from or

corroborated by observable market data by correlation or other means.

Corporate bonds and government issues (domestic and foreign): The fair value of these fixed income investments is classified as Level 2, based upon quotes from independent pricing vendors based upon independent pricing models or other model-based valuation techniques such as the present value of the stream of expected cash flows adjusted for the security's credit rating and other factors such as credit loss assumptions.

Private equity investments: The fair value of these private equity investments is not classified, valued as a practical expedient, at the net asset value of the units held by the Foundation at year end, as reported by the investment manager and within the valuation guidelines stipulated in respective investment agreements.

The following tables present the assets measured at fair value on a recurring basis on the Statement of Net Position for the fiscal year ended June 30, 2019, by the GASB Statement No. 72 hierarchy (as described previously).

Note 6. Investments: Fair Value

	Fair Value Measurements Using			
	Total	Quoted Prices in Active Markets for Identical Assets (Level 1)	Significant Other Observable Inputs (Level 2)	Significant Unobservable Inputs (Level 3)
Investments by fair value level				
Cash equivalents classified as short-term (current) investments:				
Cash sweep	\$ 13,797,195	\$ -	\$ 13,797,195	\$ -
Money market funds	2,257,450	-	2,257,450	-
Bonds and notes:				
Government issues - domestic	286,422	-	286,422	-
Government issues - foreign	70,000	-	70,000	-
Equities	585,566	585,566	-	-
Mutual funds:				
Equities	40,342,634	40,342,634	-	-
Fixed income	18,226,111	18,226,111	-	-
Private equity	2,292,015	-	-	2,292,015
Total investments by fair value level	77,857,393	\$ 59,154,311	\$ 16,411,067	\$ 2,292,015
Investments measured at the net asset value (NAV)				
Private equity investments - UFICO limited partnerships	1,823,311,662			
Total Investments	\$ 1,901,169,055			

Net asset value: GASB Statement No. 72, *Fair Value Measurement and Application*, permits the fair value of certain equity and debt investments that do not have readily determinable fair values to be based on their net asset value (NAV) per share.

Note 6. Investments: Net Asset Value

Investments measured at NAV	Fair Value	Unfunded Commitments	Redemption Frequency	Redemption Notice Period
Limited partnerships (UFICO):				
Florida Long-Term Pool Fund, LP	\$ 1,822,166,689	\$ 271,893,616	Monthly	30 days
Florida Short-Term Fund, LP-Fixed Income Series	1,144,973	-	Monthly	30 days
	\$ 1,823,311,662	\$ 271,893,616		



Limited partnerships: As of June 30, 2019, this category consists of investments in two limited partnerships managed by UFICO that invest in short-term investments, global equities, fixed income, hedge strategies and private equity. The June 30th valuations of the investments in limited partnerships are based upon the value determined by each partnership's general partner as of March 31st, adjusted for capital contributions and distributions that occurred during the quarter ended June 30th. These amounts may differ from values that would be determined if the investments in limited partnerships were publicly traded or if the June 30th valuation amounts were currently available. The nature of the investment in this category is that distributions are received through liquidation of underlying assets. Redemptions are limited at the discretion of the general partner (UFICO) to the extent any limitations are imposed by any of the underlying third party managed funds. As of June 30, 2019, it is probable that all of the investments in this category will be sold at an amount different from the net asset value of the Foundation's ownership interest and partner's capital.

As of June 30, 2019, the major categories of the limited partnerships are summarized as follows:

Note 6. Investments: UFICO Limited Partnerships

Short-term investments	\$	57,915,401
Global equities		643,479,846
Global fixed income		120,255,829
Hedge strategies		442,628,877
Private equity investments		559,031,709
Total	\$	1,823,311,662

NOTE 7. ENDOWMENTS

The Foundation's endowment consists of 3,665 individual donor-restricted endowment funds established for a variety of purposes. As required by U.S. GAAP, the net position associated with endowment funds is classified and reported based on the existence or absence of donor-imposed restrictions.

Permanent endowments: Permanent endowments are those funds subject to donor-imposed restrictions permitting only the income to be used as specified by the donor and that the principal be held in perpetuity.

Term endowments: Term endowments are similar to permanent endowments except that upon the passage of a stated period of time or a particular occurrence, all or part of the principal may be expended at any time.

Interpretation of relevant law: The Board has interpreted the State of Florida Statute (617.2104) cited as the *Florida Uniform Prudent Management of Institutional Funds Act* (FUPMIFA) as requiring the Board to use reasonable care and caution as would be exercised by a prudent investor, in considering the investment management and expenditures of endowment funds. In accordance with FUPMIFA, the Board may expend so much of an endowment fund as the Board determines to be prudent for the uses and purposes for which the endowment fund is established, consistent with the goal of conserving the long-term purchasing power of the endowment fund. The Board considers the following factors in making its determination:

- The purpose of the Foundation.
- The intent of the donor of the endowment fund.
- The terms of the applicable instrument.
- The long-term and short-term needs of the Foundation and the University in carrying out their purposes.
- General economic conditions.
- The possible effect of inflation or deflation.
- The other resources of the Foundation and the University.
- Perpetuation of the endowment.

As a result of this interpretation, the Board classifies as restricted nonexpendable: (a) the original value of gifts donated to a permanent endowment, (b) the original value of subsequent gifts to the permanent endowment and (c) the original value of other corpus additions including state match provided to the permanent endowment. The remaining portion of the donor-restricted permanent endowment fund that is not classified as restricted nonexpendable is classified as restricted expendable until those amounts are appropriated for expenditure in a manner consistent with the standard of prudence prescribed by FUPMIFA. However, by Board policy, any appreciation is considered an asset of each individual endowment and is not appropriated for general Foundation or University use. For term endowments, the entire value of the endowment is classified as restricted expendable until those amounts are appropriated for expenditure as specified by the terms for that endowment.

Spending policy: The Foundation's spending policy is designed to provide for positive growth in the market value of its endowment, net of distributions, over an extended period of time. In establishing this policy, the Board considered the long-term expected return of the endowment investment pool and the goal of maintaining the purchasing power of the endowment assets. Over the long-term, the current spending policy is designed to return a net positive gain in market value (growth) after spendable transfers and administrative fees.

The annual rate for spendable transfers, distributed quarterly, is 4% of the spending base of each endowment's principal fund. The principal fund's spending base is a percentage of the market value, and is adjusted quarterly, if necessary, to fall within a range of 85% to 95% of the market value of the endowment investments. In addition, the principal fund is assessed an annual 1.35% fee, charged quarterly. This fee is a portion of the funding mechanism for the advancement programs of the University.

Investment policy: The Foundation's investment objectives are to provide an annualized real rate of return, net of fees, of at least 5% in order to preserve, or increase, the purchasing power of endowment capital, while generating an income stream to support activities



A FATHER'S GIFT

*Hotel magnate **Harris Rosen's** \$12 million gift, inspired by his son's struggle, will help support UF's vision to "rewrite the story of brain cancer." Harris is widely heralded for his investments in underserved communities. From pre-K programs to college scholarships, his efforts transform lives by vastly expanding opportunities available to families in two of Orlando's struggling neighborhoods. Rosen also created robust college and healthcare programs for his employees. This year, he contributed \$12 million toward UF's brain tumor research program.*



expanding opportunities available to families in two of Orlando's struggling neighborhoods. Rosen also created robust college and healthcare

programs for his employees. This year, he contributed \$12 million toward UF's brain tumor research program.

NOTES TO FINANCIAL STATEMENTS

of the funds held for the colleges and units of the University. This policy is designed to tolerate volatility in short and intermediate-term performance.

To satisfy its long-term rate of return objectives, the Foundation relies on a total return strategy in which investment returns are achieved through both capital appreciation (realized and unrealized) and current yield (interest and dividends). The Foundation, through UFICO, targets a diversified asset allocation to achieve long-term objectives within prudent risk constraints.

The following displays the total ending endowment balances for nonexpendable endowments or donor-restricted endowments as of June 30, 2019:

Note 7. Endowments

Total endowment balance	\$	1,817,826,793
Less term endowment		(1,041,634)
Less endowment capital assets, net		(2,853,518)
Less appreciation portion of restricted expendable		(453,055,660)
Restricted nonexpendable balance	\$	1,360,875,981
Endowment, beginning of year	\$	1,727,399,751
Contributions and other revenues		53,823,055
Investment return, net		116,453,654
Appropriation of endowment assets for expenditure		(79,849,667)
Endowment, end of year	\$	1,817,826,793

Endowment net position and activity for University related entities are not included in the preceding schedule since the activity of the related entities is eliminated and the aggregate net position is recorded as a held on behalf liability. The ending net position including those entities at June 30, 2019 is as follows:

Note 7. Endowments: University Endowment

University of Florida permanent endowments	\$	1,816,785,159
University of Florida term endowments		1,041,634
Permanent endowments held on behalf of University of Florida related entities		7,422,739
Total University endowment	\$	1,825,249,532



NOTE 8. REAL ESTATE HELD FOR SALE

Contributions of real estate held for sale are generally recorded at their appraised value at the date of gift. Real estate held for sale is actively marketed with realtors and is expected to be sold at a reasonable price.

The table below sets forth a summary of changes real estate held for sale for the fiscal year ended June 30, 2019.

Note 8. Real Estate Held for Sale

Real estate held for sale, beginning of year	\$	5,343,720
Donations		3,883,399
Disposals		(1,013,173)
Transfers from for use		300,000
Impairments		(90,339)
Real estate held for sale, end of year	\$	8,423,607

NOTE 9. CAPITAL ASSETS

Capital assets activity for the fiscal year ended June 30, 2019 is as follows:

Note 9. Capital Assets				
	<u>June 30, 2018</u>	<u>Additions</u>	<u>Reductions</u>	<u>June 30, 2019</u>
Property and equipment:				
Land held for use and land preserve	\$ 58,545,860	\$ 281,692	\$ (300,000)	\$ 58,527,552
Buildings held for use	7,460,120	231,040	-	7,691,160
Less accumulated depreciation	(5,184,099)	(221,820)		(5,405,919)
Net buildings held for use	2,276,021	9,220	-	2,285,241
Equipment, furniture and vehicles	4,127,746	821,123	(1,517)	4,947,352
Less accumulated depreciation	(2,982,339)	(739,312)	-	(3,721,651)
Net equipment, furniture and vehicles	1,145,407	81,811	(1,517)	1,225,701
Other capital assets	95,002	-	-	95,002
Total capital assets, net	<u>\$ 62,062,290</u>	<u>\$ 372,723</u>	<u>\$ (301,517)</u>	<u>\$ 62,133,496</u>

Depreciation expense was charged to the following operating expense functions for the fiscal year ended June 30, 2019.

Note 9. Capital Assets: Depreciation Expense

Program services	\$ 67,913
Supporting services	893,219
Total	<u>\$ 961,132</u>

NOTE 10. LONG-TERM LIABILITIES

Long-term liabilities for the fiscal year ended June 30, 2019 is as follows:

Note 10. Long-Term Liabilities					
	<u>June 30, 2018</u>	<u>Additions</u>	<u>Reductions</u>	<u>June 30, 2019</u>	<u>Current Portion</u>
Shands Teaching Hospital and Clinics, Inc.					
parking garage	\$ 600,000	\$ -	\$ (100,000)	\$ 500,000	\$ 100,000
College of the Arts warehouse	532,593	-	(16,493)	516,100	17,510
University retreat center	2,000,000	-	(1,000,000)	1,000,000	1,000,000
Total capital related notes payable	<u>3,132,593</u>	<u>-</u>	<u>(1,116,493)</u>	<u>2,016,100</u>	<u>1,117,510</u>
Split-interest agreements:					
Annuity liabilities	8,559,162	547,792	(1,122,569)	7,984,385	955,613
Trust liabilities	16,173,261	20,924,673	(160,887)	36,937,047	2,740,717
Other noncurrent liabilities	2,843,888	638,744	(300,205)	3,182,427	-
Amounts held on behalf of University of Florida related entities	29,763,464	24,897,781	(14,701,086)	39,960,159	-
Total other noncurrent liabilities	<u>57,339,775</u>	<u>47,008,990</u>	<u>(16,284,747)</u>	<u>88,064,018</u>	<u>3,696,330</u>
Total noncurrent liabilities	<u>\$ 60,472,368</u>	<u>\$ 47,008,990</u>	<u>\$ (17,401,240)</u>	<u>\$ 90,080,118</u>	<u>\$ 4,813,840</u>


Shands Teaching Hospital and Clinics, Inc.

parking garage: On June 30, 1994, the Foundation entered into a \$3,000,000 30-year note, maturing September 1, 2023, to assume the financial obligation for the Shands parking garage facility. The note is payable to Shands in annual installments of \$100,000. The note is noninterest bearing but interest is imputed at a rate of 3.75% for the fiscal year ended June 30, 2019. The note is collateralized by an asset with a carrying value of \$500,000.

College of the Arts warehouse: On April 15, 2010, the Foundation entered into a \$600,000 24-year note, maturing April 1, 2034, to purchase property for the University of Florida College of the Arts. The note is payable to an individual in monthly installments of \$3,500 through 2016, \$4,000 through 2021 and \$4,500 through 2034. The note bears interest at a fixed rate of 6%. The note is collateralized by property with a carrying value of \$508,333.

University retreat center: On August 26, 2014, the Foundation entered into a \$5,000,000 5-year

note, maturing August 26, 2019, to purchase property for the University. The note is payable to a limited partnership in annual installments of \$1,000,000. The note bears interest at a fixed rate of 2%. The note is collateralized by property with a carrying value of \$10,750,903.

Interest expense: Total interest expense for the fiscal year ended June 30, 2019, was \$82,393. These amounts are included in program services and supporting services in the accompanying Statement of Revenues, Expenses and Changes in Net Position.

Principal and interest requirements: Minimum principal and estimated interest payments required under all debt agreements, subsequent to June 30, 2019, are as follows:

Note 10. Long-term Liabilities: Debt Service Requirements

Year Ending June 30,	Principal	Interest	Total
2020	\$ 1,117,510	\$ 50,490	\$ 1,168,000
2021	119,593	29,407	149,000
2022	125,967	28,033	154,000
2023	127,568	26,432	154,000
2024	129,268	24,732	154,000
2025-2029	175,753	94,247	270,000
2030-2034	220,442	33,049	253,490
Total	\$ 2,016,100	\$ 286,390	\$ 2,302,490

The interest rates used to calculate future interest payments are the stated interest rates for the fixed rate loans.

NOTE 11. RETIREMENT PLANS
GENERAL INFORMATION ABOUT THE UNIVERSITY OF FLORIDA FOUNDATION PENSION PLAN

Plan description: The Foundation has a noncontributory, defined benefit pension plan (the Plan) that covered all permanent Foundation employees before all remaining employees were converted to University employees by December 31, 2017.

Benefits provided: The Plan provides for deferred benefits and covered participants with more than 5 years of service as a Foundation employee and a minimum age of 21 years. Benefits are based on years of service and the employee's final average compensation as defined under the Plan.

Employees covered by benefit terms: At June 30, 2019, the following employees were covered by the benefit terms:

Note 11. Retirement Plans: Covered Employees

Inactive employees or beneficiaries currently receiving benefits	80
Inactive employees entitled to but not yet receiving benefits	95
Active employees	-
Total	<u>175</u>

As of June 30, 2018, there were no employees covered by the Plan. Currently, all personnel are University employees who participate in the University's retirement plans.

Contributions: The Plan is noncontributory for employees. The Foundation makes annual contributions to the Plan in compliance with legal funding requirements as determined by the Plan's actuary, Arthur J. Gallagher & Co.

NET PENSION ASSET

The Plan's net pension asset was measured as of June 30, 2019 by comparing the Plan's fiduciary net position to the total pension liability. The total pension liability used to calculate the net pension asset was determined by an actuarial valuation as of July 1, 2018.

Actuarial assumptions: The total pension liability in the June 30, 2019 actuarial valuation was determined using the following actuarial assumptions, applied to all periods included in the measurement:

Note 11. Retirement Plans: Assumptions

Inflation	3%
Salary increases	N/A
Investment rate of return	7%

Mortality rates were based on the RP-2014 mortality tables fully projected with scale MP-2018.

The long-term expected rate of return on pension plan investments was determined using a building-block method in which best-estimate ranges of expected future real rates of return (expected returns, net of pension plan investment expense and inflation) are developed for each major asset class. These ranges are combined to produce the long-term expected rate of return by weighting the expected future real rates of return by the target asset allocation percentage and by adding expected inflation. The target allocation and best estimates of arithmetic real rates of return for each major asset class are summarized in the following table:

Note 11. Retirement Plans: Target Allocation

Asset Class	Target Allocation	Long-term Expected Real Rate of Return
Global equity	60%	8.5%
Fixed income	39%	4.7%
Cash	1%	3.0%
Total	<u>100%</u>	

Discount rate: The discount rate used to measure the total pension liability was 7%. The Plan's fiduciary net position was projected to be available to make all projected future benefit payments to inactive employees. Therefore, the discount rate for calculating the total pension asset is equal to the long-term expected rate of return.



CHANGES IN THE NET PENSION ASSET

Note 11. Retirement Plans: Changes in Net Pension

	Increase (Decrease)		
	Total Pension Liability	Plan Fiduciary Net Position	Net Pension Liability (Asset)
Balances at 6/30/2018	\$ 23,966,003	\$ 26,091,574	\$ (2,125,571)
Changes for the year:			
Service cost	-	-	-
Interest	1,640,829	-	1,640,829
Differences between expected and actual experience	(1,683,207)	-	(1,683,207)
Changes of assumptions	(65,696)	-	(65,696)
Contributions - employer	-	1,300,000	(1,300,000)
Net investment income	-	2,367,391	(2,367,391)
Benefit payments, including refunds of member contributions	(1,051,181)	(1,051,181)	-
Administrative expense	-	(130,971)	130,971
Net changes	<u>(1,159,255)</u>	<u>2,485,239</u>	<u>(3,644,494)</u>
Balances at 6/30/2019	<u>\$ 22,806,748</u>	<u>\$ 28,576,813</u>	<u>\$ (5,770,065)</u>

Sensitivity of the net pension asset to changes

in the discount rate: The following presents the net pension asset of the Plan, calculated using the discount rate of 7%, as well as what the Plan's net

pension asset would be if it were calculated using a discount rate that is 1-percentage point higher (8%) or 1-percentage point lower (6%) than the current rate:

Note 11. Retirement Plans: Sensitivity to Changes in Discount Rate

	1% Decrease (6%)	Current Discount Rate (7%)	1% Increase (8%)
Net pension asset	\$ (2,673,010)	\$ (5,770,065)	\$ (8,297,448)





PENSION EXPENSE AND DEFERRED OUTFLOWS OF RESOURCES AND DEFERRED INFLOWS OF RESOURCES RELATED TO PENSIONS

For the fiscal year ended June 30, 2019, the Foundation recognized a pension benefit of \$1,597,606. At June 30, 2019, the Foundation reported deferred outflows of resources and deferred inflows of resources as related to pensions from the following sources:

Note 11. Retirement Plans: Deferred Outflows and Inflows

	Deferred Outflows of Resources	Deferred Inflows of Resources
Net difference between projected and actual earnings on investments	\$ -	\$ (432,083)

Amounts reported as deferred outflows of resources and deferred inflows of resources will be recognized in pension expense as follows:

Note 11. Retirement Plans: Recognition of Deferred Inflows

Year ended June 30:	Deferred Inflows of Resources
2020	\$ (17,894)
2021	(274,667)
2022	(32,149)
2023	(107,373)
Total	\$ (432,083)

UNIVERSITY RETIREMENT PLANS

The University follows GASB Statement No. 68, *Accounting and Financial Reporting for Pensions – an amendment of GASB Statement No. 27*. This statement requires a cost-sharing employer to recognize a liability for its proportionate share of the net pension liability.

Florida Retirement System (FRS): The Florida Retirement System (FRS) was created in Chapter 121, Florida Statutes and is a multiple-employer defined benefit pension plan. Essentially all regular employees of the University are eligible to enroll as members of the State-administered FRS.

FRS Investment Plan (Investment Plan): Pursuant to Section 121.4501, Florida Statutes, the Florida legislature created a Public Employee Optional Retirement Program (PEORP), also known as the FRS Investment Program. The Investment Plan is a defined contribution plan. Eligible FRS members may elect to participate in the Investment Plan in lieu of the FRS defined benefit plan.

State University System Optional Retirement Program (SUSORP): Pursuant to Section 121.35, Florida Statutes, the Florida legislature created an Optional Retirement Program (SUSORP) for eligible university faculty and administrators. The SUSORP is a defined contribution plan.

The University does not determine a separate net pension liability amount for University personnel working for the Foundation participating in the above plans. As a result, no liability has been accrued in these financial statements and the University accrues the entire amount. Please refer to the University's financial statements for further details on the plans.

NOTES TO FINANCIAL STATEMENTS

Other post-employment healthcare benefits: As required by Section 112.081, Florida Statutes, retirees and their eligible dependents are provided the same health care coverage as is offered to active employees at the same premium cost (borne by the retiree) applicable to active employees. The University subsidizes the premium rates paid by retirees, including Foundation funded participants, by allowing them to participate in the plan at reduced or blended group (implicitly subsidized) rates. These rates provide an implicit subsidy for retirees because, on an actuarial basis, their current and future claims are expected to result in higher costs to the plan on average than those of active employees. Since all employees working for the Foundation are considered University employees, the University does not determine a separate unfunded liability amount for University personnel working for the Foundation.

NOTE 12. ADMINISTRATIVE FEES

The University funds its advancement programs primarily through a series of fees. The fees are part of the Foundation's operating budget. The Finance Advisory Committee of the Foundation's Board is responsible for reviewing and recommending a fee assessment policy. Changes to the policy are approved by the Foundation's Board.

During the fiscal year ended June 30, 2019, the Foundation assessed the following fees:

Note 12. Administrative Fees

Fees assessed on pooled investments	\$	20,250,371
Gift fees associated with major gifts and eminent scholar program funds		287,736
Gift fees associated with all other funds		5,042,559
Real estate fees		34,346
Non-gift fees		53,060
Total fees	\$	25,668,072

For financial reporting purposes, these fees are eliminated.

NOTE 13. RELATED PARTY TRANSACTIONS

The Foundation considers the University and the University's direct support organizations (DSOs)

to be related parties for the purpose of the financial statements.

The Foundation is the primary fundraiser for the University; in return, the University provides monetary support. The Foundation receives administrative and fundraising support from the University pertaining to expenses for salaries and related benefits that are funded as part of the University support.

The Foundation assumed the financial obligation for a parking garage facility and the related \$3,000,000 note payable, of which \$500,000 is outstanding as of June 30, 2019, from Shands Teaching Hospital and Clinics, Inc. during 1994. Simultaneously, the Foundation executed a non-cancelable operating lease with the University as the tenant. The lease agreement requires the University to make annual lease payments of \$100,000 to the Foundation through June 30, 2024 (see Note 10).

The Foundation executed a non-cancelable operating lease for real property with the University as the tenant. The lease agreement requires the University to make monthly lease payments of \$3,500 through 2016, \$4,000 through 2021 and \$4,500 through 2025. The University has the right to renew the lease; whereby, the agreement requires monthly lease payments of \$4,500 to be made through 2034 (see Note 10).

The Foundation has several long-term agreements relating to office facilities with the University expiring in 2044 to 2046. Lease payments for these facilities range from \$1 per year to \$10 per year, well below the current market rates for comparable space. The Foundation recognized an expense and in-kind revenue associated with these lease agreements of \$1,655,596 for the fiscal year ended June 30, 2019.

The Foundation transfers excess operating funds and certain funds held on behalf of University related entities and records a receivable due from the University. The receivable from the University was \$30,732,137 as of June 30, 2019, and is included in receivables and prepaid expenses in the accompanying Statement of Net Position.



NOTE 14. RISK MANAGEMENT

The Foundation is exposed to various risks of loss related to torts; theft of, damage to and destruction of assets; errors and omissions; and natural disasters for which the Foundation purchases commercial insurance. Insurance for job-related illnesses or injuries to University employees is the responsibility of the state of Florida and no amounts are charged to the various state entities for this cost.

During the fiscal year ended June 30, 2019, basic types of insurance coverage remained the same as the types of coverage as of June 30, 2018. No settlements have exceeded coverage levels in place during the past three fiscal years.

NOTE 15. CONTINGENCIES

The Foundation participates in state assisted grant programs that are subject to review and audit by the grantor agencies. Entitlement to these resources is generally conditional upon compliance with the terms and conditions of the grant agreements and applicable state regulations. Any disallowance

resulting from a regulatory audit may become a liability to the Foundation. Liabilities, if any, from such audits, if any, are recorded when the amounts of such liabilities become reasonably determinable.

NOTE 16. UNIVERSITY OF FLORIDA ALUMNI ASSOCIATION, INC. BLENDED COMPONENT UNIT

Condensed component unit information for the University of Florida Alumni Association, Inc. (the Alumni Association), a blended component unit, as of and for the fiscal year ended June 30, 2019, is as follows:

Note 16. Condensed Statements

Condensed Statement of Net Position

Assets	\$ -
Liabilities	\$ -
Net position	\$ -

Condensed Statement of Revenues, Expenses and Changes in Net Position

Operating revenues	
Alumni operating revenues	\$ 2,205,527
Support from the Foundation	1,747,009
Total operating revenues	3,952,536
Operating expenses	
Alumni operating expenses	3,952,536
Change in net position	-
Net position - beginning of year	-
Net position - end of year	\$ -

Condensed Statement of Cash Flows

Net cash used in operating activities	\$ -
Net change in cash and cash equivalents	-
Cash and cash equivalents, beginning of year	-
Cash and cash equivalents, end of year	\$ -

The Alumni Association operating expenses are included in alumni relations under supporting services on the Statement of Revenues, Expenses and Changes in Net Position. The Foundation funds any operating deficiency of the Alumni Association, and the operating accounts related to the Alumni Association have no assets or liabilities at the end of the fiscal year.

The background of the page is a photograph of the University of Florida's main archway, with a large palm tree in the foreground. The entire image is overlaid with a semi-transparent orange filter. On the left side, there are several vertical orange lines of varying heights.

Supplementary Information (Unaudited)

FOR THE FISCAL YEAR ENDED JUNE 30, 2019



SUPPLEMENTARY INFORMATION (UNAUDITED)

Supplemental Schedule of Revenues, Expenses and Changes in Net Position (for the fiscal year ended June 30, 2019)

		Restricted		Net Investment	
	Unrestricted	Expendable	Nonexpendable	in Capital Assets	Total
Operating revenues					
Contributions, net	\$ 50,801	\$ 78,497,201	\$ -	\$ 231,692	\$ 78,779,694
Support from the University of Florida	19,451,360	-	-	-	19,451,360
Investment return, net	(51,677)	117,827,553	(145,490)	-	117,630,386
Alumni program support	1,421,472	(76,844)	-	-	1,344,628
License plate revenues	1,476,982	979,035	-	-	2,456,017
Other revenues, gains and losses	1,949,872	3,113,761	-	-	5,063,633
Total operating revenues, net	24,298,810	200,340,706	(145,490)	231,692	224,725,718
Operating expenses					
Program services					
General college support	1,308,280	43,172,085	-	11,593	44,491,958
Student financial aid	-	23,967,642	-	-	23,967,642
Faculty and staff support	-	21,385,687	-	-	21,385,687
Research	-	19,716,723	-	-	19,716,723
Facilities	-	5,967,714	-	48,335	6,016,049
Other	-	11,661,501	-	7,985	11,669,486
Total program services	1,308,280	125,871,352	-	67,913	127,247,545
Supporting services					
Communications and marketing	2,027,847	-	-	-	2,027,847
Alumni relations	5,618,688	-	-	-	5,618,688
Development	23,532,643	-	-	-	23,532,643
Operations	9,278,719	-	-	893,219	10,171,938
Talent management	1,150,216	-	-	-	1,150,216
Total supporting services	41,608,113	-	-	893,219	42,501,332
Total operating expenses	42,916,393	125,871,352	-	961,132	169,748,877
Operating income (loss)	(18,617,583)	74,469,354	(145,490)	(729,440)	54,976,841
Nonoperating revenues					
Change in value of split-interest agreements	-	1,101,635	-	-	1,101,635
Total nonoperating revenues	-	1,101,635	-	-	1,101,635
Income (loss) before changes in nonexpendable	(18,617,583)	75,570,989	(145,490)	(729,440)	56,078,476
Changes in nonexpendable					
Endowment contributions	-	-	51,383,652	-	51,383,652
Alumni endowment life memberships	-	-	547,500	-	547,500
Other revenues, gains and losses	-	-	497,997	-	497,997
Change in value of split-interest agreements	-	-	1,393,833	-	1,393,833
Total changes in nonexpendable	-	-	53,822,982	-	53,822,982
Transfers					
Net transfers in (out)	(794,708)	593,884	200,824	-	-
Internal fees in (out)	24,675,795	(24,675,795)	-	-	-
Capital asset adjustments in (out)	(919,607)	(997,533)	-	1,917,140	-
Total transfers	22,961,480	(25,079,444)	200,824	1,917,140	-
Change in net position	4,343,897	50,491,545	53,878,316	1,187,700	109,901,458
Net position – beginning of year	13,764,717	503,042,090	1,306,997,665	58,929,696	1,882,734,168
Net position – end of year	\$ 18,108,614	\$ 553,533,635	\$ 1,360,875,981	\$ 60,117,396	\$ 1,992,635,626

Supplemental Schedule of Changes in Net Pension Asset and Related Ratios

	<u>June 30, 2019</u>
Total pension liability	
Service cost	\$ -
Interest	1,640,829
Differences between expected and actual experience	(1,683,207)
Changes of assumptions	(65,696)
Benefit payments, including refunds of member contributions	<u>(1,051,181)</u>
Net change in total pension liability	<u>(1,159,255)</u>
Total pension liability - beginning	<u>23,966,003</u>
Total pension liability - ending (a)	<u>\$ 22,806,748</u>
Plan fiduciary net position	
Contributions - employer	\$ 1,300,000
Net investment income	2,367,391
Benefit payments, including refunds of member contributions	(1,051,181)
Administrative expense	<u>(130,971)</u>
Net change in plan fiduciary net position	<u>2,485,239</u>
Plan fiduciary net position - beginning	<u>26,091,574</u>
Plan fiduciary net position - ending (b)	<u>\$ 28,576,813</u>
Net pension liability (asset) - ending (a) - (b)	<u>\$ (5,770,065)</u>
Plan fiduciary net position as a percentage of the total pension liability	125.3%
Covered-employee payroll	\$ -
Net pension asset as a percentage of covered-employee payroll	N/A

Supplemental Schedule of Pension Contributions

	<u>June 30, 2019</u>
Actuarially determined contribution	\$ 795,418
Contributions in relation to the actuarially determined contribution	<u>1,300,000</u>
Contribution excess	<u>\$ (504,582)</u>
Covered-employee Payroll	\$ -
Contributions as a percentage of covered-employee payroll	N/A

**Report on Internal Control Over Financial Reporting and on
Compliance and Other Matters Based on an Audit of Financial Statements
Performed in Accordance with *Government Auditing Standards***

Independent Auditor's Report

To the Board of Directors
University of Florida Foundation, Inc.

We have audited, in accordance with the auditing standards generally accepted in the United States of America and the standards applicable to financial audits contained in *Government Auditing Standards*, issued by the Comptroller General of the United States, the financial statements of the University of Florida Foundation, Inc. (the Foundation), which comprise the statement of net position as of June 30, 2019, and the related statements of revenues, expenses and changes in net position, and cash flows for the year then ended, and the related notes to the financial statements, and have issued our report thereon dated September 27, 2019.

Internal Control Over Financial Reporting

In planning and performing our audit of the financial statements, we considered the Foundation's internal control over financial reporting (internal control) to determine the audit procedures that are appropriate in the circumstances for the purpose of expressing our opinion on the financial statements, but not for the purpose of expressing an opinion on the effectiveness of the Foundation's internal control. Accordingly, we do not express an opinion on the effectiveness of the Foundation's internal control.

A *deficiency in internal control* exists when the design or operation of a control does not allow management or employees, in the normal course of performing their assigned functions, to prevent, or detect and correct, misstatements on a timely basis. A *material weakness* is a deficiency, or a combination of deficiencies, in internal control, such that there is a reasonable possibility that a material misstatement of the entity's financial statements will not be prevented, or detected and corrected, on a timely basis. A *significant deficiency* is a deficiency, or a combination of deficiencies, in internal control that is less severe than a material weakness, yet important enough to merit attention by those charged with governance.

Our consideration of internal control was for the limited purpose described in the first paragraph of this section and was not designed to identify all deficiencies in internal control that might be material weaknesses or significant deficiencies. Given these limitations, during our audit, we did not identify any deficiencies in internal control that we consider to be material weaknesses. However, material weaknesses may exist that have not been identified.

THE POWER OF BEING UNDERSTOOD
AUDIT | TAX | CONSULTING

Compliance and Other Matters

As part of obtaining reasonable assurance about whether the Foundation's financial statements are free from material misstatement, we performed tests of its compliance with certain provisions of laws, regulations, contracts, and grant agreements, noncompliance with which could have a direct and material effect on the determination of financial statement amounts. However, providing an opinion on compliance with those provisions was not an objective of our audit, and accordingly, we do not express such an opinion. The results of our tests disclosed no instances of noncompliance or other matters that are required to be reported under *Government Auditing Standards*.

Purpose of this Report

The purpose of this report is solely to describe the scope of our testing of internal control and compliance and the results of that testing, and not to provide an opinion on the effectiveness of the Foundation's internal control or on compliance. This report is an integral part of an audit performed in accordance with *Government Auditing Standards* in considering the Foundation's internal control and compliance. Accordingly, this communication is not suitable for any other purpose.

RSM US LLP

Orlando, Florida
September 27, 2019



FISCAL YEAR 2019 AUDIT COMMITTEE

Shannon Carbone
Chair

Ann O'Brien
Vice-chair

Mike McKee
UF Vice President & CFO

Mark Criser
UF Alumni Association Representative

Bill Alcorn

Tom Frankland

Steve Nouss

Eugene Pettis

Michael Poole

Alison Rand

Warren Tedder, Jr.

PRINCIPAL FINANCE AND ACCOUNTING OFFICIALS

David Christie
Assistant Vice President & CFO

Randy Settle
Senior Advisor

Mike Johnson
Controller

J.A. Lopez
Assistant Controller

A photograph of a modern building with a glass facade, reflecting the sky. The building is blue-tinted. In the foreground, there is a field of daisy flowers, which are orange-tinted. The text "Turning the page from Your Health to Your Environment" is overlaid on the image, flanked by two diagonal lines.

*Turning the page from Your
Health to Your Environment*



UNIVERSITY *of* FLORIDA
FOUNDATION

www.uff.ufl.edu